



Subscribe to Caron Connections, our free e-newsletter.

Enter your e-mail address

subscribe

Caron Yarns

Simply Soft®

Simply Soft® Baby

Simply Soft® Brites

Simply Soft® Heather

Simply Soft® Paints **NEW**

Simply Soft® Quick

Simply Soft® Tweed

Simply Soft® Shadows

Bliss

Craft & Rug Yarn

Natura®

One Pound

Wintuk®



Check out our newest yarns!

Caron Latch Hook Kits

The Simpsons™ **NEW**

Shaggy

Caron® Classics

Natura®

WonderArt®

Krafty Kids™

Christmas designs



Buy all your favorite Caron products online

Embroidered Flower Throw

with

SIMPLY SOFT®

designed by Susan Shildmyer

TECHNIQUE USED: Knit



INTERMEDIATE

FINISHED MEASUREMENTS

Width 38"

Length 46"

Note: Yarn amounts are provided in oz measurements rather than number of skeins, as skein sizes vary.

MATERIALS

Caron International's Simply Soft (100% Acrylic) (100% acrylic; 6 oz/170 g. 315 yds/288 m skein):

Color 9710 Country Blue, 18oz/510g (MC)

Color 9750 Chocolate, 6oz/170 g (A)

Color 9709 Lt. Country Blue, 6oz/170 g (B)

Color 9703 Bone, 6oz/170 g (C)

Color 9702 Off White, 6oz/170 g (D)

One 29" circular US size 6(4 mm), or size to obtain gauge

Tapestry needle (tn)

GAUGE

In Stockinette St 18 sts/ 26 rows = 4in/10cm



click to enlarge image
chart

Printer Friendly PDF

Make the matching pillow!



STITCHES USED

Stockinette St

Garner St

Embroidery Stitches (see diagram)

Chain St

Fern Leaf St

Running St

French Knots

Duplicate St

Note1: Chart is work from right to left on RS rows and left to right on WS rows.

Note 2: In intarsia method, the 2nd color is twisted (or picked up) from underneath the 1st color.

CENTER PANEL

Using MC CO 108 sts

Wind MC, A, B, C and D into small bundles or wrap onto bobbins.

Working Intarsia method described in note 2, work each row of chart 2 times across. – 108sts

Rep 70 rows of the chart 3 times. 210 rows. Bind off in MC.

Embroidery

Using single strand and tn, work lower stem in duplicate st in Bone (C)

Work center stem in duplicate st in Lt. Country Blue (B)

Work top stem in chain st in Bone (C)

Work chain st around leaves as follows:

Lt Country Blue (B) leaves in Country Blue (MC)

Bone (C) leaves in Lt. Country Blue (B)

Off White (D) leaves in Bone (C)

Work Fern Leaf st in center of each leaf as follows:

Lt. Country Blue (B) leaves in C

Bone (C) leaves in Off White (D)

Off White (D) leaves in Chocolate (A)

Work running st in Off white (D) along Chocolate (A) lines as shown

Using double strand of Bone (C) work French knots as shown

Border

With RS facing and MC, pick up and knit 108 sts from Cast on edge.

Begin garter st, inc 1 st at beginning this and every row 62 times. – 170 sts

Bind off knitwise.

Repeat at Bound off edge.

With RS facing and MC, pick up and knit 157 sts along side edge.

Begin Garter st, increase 1 st at beginning of this and every row, 62 times. – 219 sts

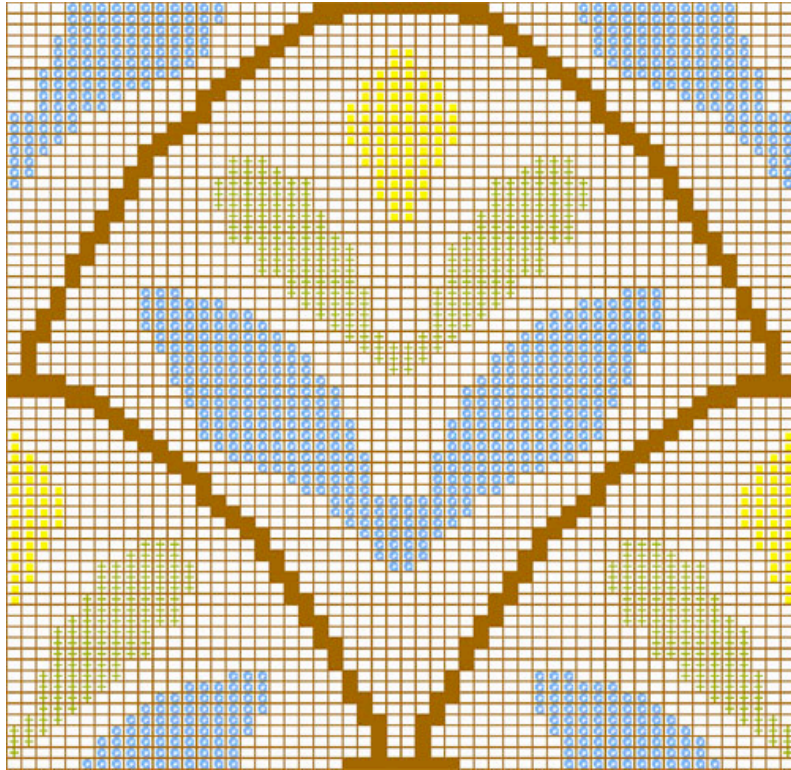
Bind off knitwise.

Repeat on other side edge.

FINISHING

Using MC and tn, sew mitered corners together.
Using tn, weave in ends.

- (D) Off White
9702
- B Lt. Country Blue
9709
- C Bone
9703
- A Chocolate
9750



|| Yarns || Free Projects || Where to Buy || Links || Learning || Contact Us || Caron Connections || News ||
Latch Hook ||

Visit Bond America online

©2008 Caron International