



Subscribe to Caron Connections, our free e-newsletter.

Enter your e-mail address

subscribe

Caron Yarns

Simply Soft®

Simply Soft® Baby
Simply Soft® Brites
Simply Soft® Heather
Simply Soft® Paints **NEW**
Simply Soft® Quick
Simply Soft® Tweed
Simply Soft® Shadows

Bliss

Craft & Rug Yarn

Natura®

One Pound

Wintuk®



Check out our newest yarns!

Caron Latch Hook Kits

The Simpsons™ **NEW**

Shaggy

Caron® Classics

Natura®

WonderArt®

Krafty Kids™

Christmas designs



Buy all your favorite Caron products online

Embroidered Flower Neckroll Pillow

with
SIMPLY SOFT®

designed by Susan Shildmyer

TECHNIQUE USED: Knit



FINISHED MEASUREMENTS

Circumference 21"

Length 15"

Note: Yarn amounts are provided in oz measurements rather than number of skeins, as skein sizes vary.

MATERIALS

Caron International's Simply Soft (100% Acrylic) (100% acrylic; 6 oz/170 g. 315 yds/288 m skein):

Color 9710 Country Blue, 6oz/170 g (MC)

Color 9750 Chocolate, 6oz/170 g (A)

Color 9709 Lt. Country Blue, 6oz/170 g (B)

Color 9703 Bone, 6oz/170 g (C)

Color 9702 Off White, 6oz/170 g (D)

One 29" circular US size 6(4 mm), or size to obtain gauge

Tapestry needle (tn)

15" bolster pillow form



click to enlarge image
chart

Printer Friendly PDF

Make the matching throw!



GAUGE

In Stockinette St 18 sts/ 26 rows = 4in/10cm

STITCHES USED

Stockinette St

Garter St

Embroidery Stitches (see [diagram](#))

Chain Stitch

Fern Leaf Stitch

Running Stitch

French Knots

Duplicate Stitch

Note1: Chart is work from right to left on RS rows and left to right on WS rows.

Note 2: In intarsia method, the 2nd color is twisted (or picked up) from underneath the 1st color.

CENTER PANEL

Using MC CO 54 sts

Wind MC, A, B, C and D into small bundles or wrap onto bobbins.

Working Intarsia method described in note 2, work each row of chart 2 times across. – 108sts

Rep 70 rows of the chart 2 times. 140 rows. Bind off in MC.

Embroidery

Using single strand and tn, work lower stem in duplicate stitch in Bone (C)

Work center stem in duplicate stitch in Lt. Country Blue (B)

Work top stem in chain stitch in Bone (C)

Work chain st around leaves as follows:

Lt Country Blue (B) leaves in Country Blue (MC)

Bone (C) leaves in Lt. Country Blue (B)

Off White (D) leaves in Bone (C)

Work Fern Leaf stitch in center of each leaf as follows:

Lt. Country Blue (B) leaves in C

Bone (C) leaves in Off White (D)

Off White (D) leaves in Chocolate (A)

Work running st in Off white (D) along Chocolate (A) lines as shown

Using double strand of Bone (C) work French knots as shown

Using tn, weave in ends.

Border

With RS facing and MC, pick up and knit 102 sts along side edge.

Begin Garter st, work even for 18 rows (9 ridges), end with WS row.

Dec Row 1 (RS): K1, k2tog; rep to end – 68 sts

Row 2 and all WS rows. Knit

Dec Row 3: *K2tog, k1; rep to last 2 sts, k2tog. – 45 sts

Dec Row 5: *k1, k2tog; rep from * to end. – 30 sts

Dec Row 7: *K1, k2tog; rep from * to end. – 20 sts

Dec Row 9: *K2tog, k1; rep from * to last 2 sts, k2tog. – 13 sts

Dec Row 11: *k1, k2tog; rep from * to last st, k1. – 9 sts

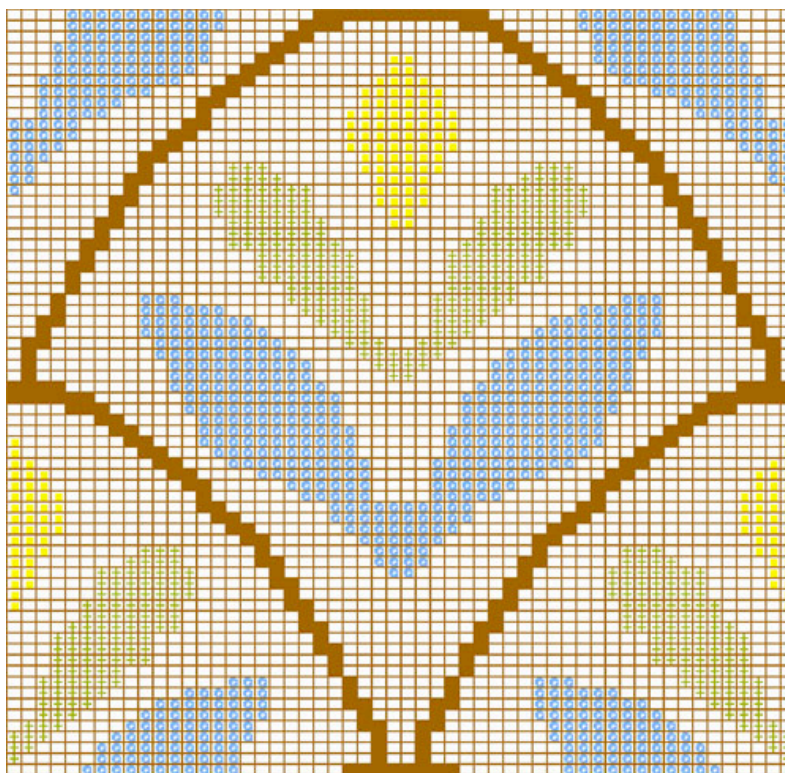
Cut yarn leaving 6" tail. Thread tail onto tn. Pull through all sts on needle twice and pull tight to close.

Repeat on other side edge.

FINISHING

Place pillow form in cover. Using MC and tn, sew ends and seam.

- (D) Off White
9702
- B Lt. Country Blue
9709
- + C Bone
9703
- A Chocolate
9750



|| Yarns || Free Projects || Where to Buy || Links || Learning || Contact Us || Caron Connections || News ||
Latch Hook ||

Visit Bond America online

©2008 Caron International